

# VCT NEWS

Issue No 32

September 1989

## EDITORIAL

The Vintage Carriages Trust has had a productive Summer with much noticeable progress being made on the Ingrow Shed. Bellerophon and the MS&L have been on the road spreading the "VCT news". We would hope you will be able to come along to the AGM and open day on Saturday 14 October 1989. We are sure you will find this issue interesting and informative with many photographs of VCT in action.

John Brailsford



Agecraft No 3 and GCR No 176 await  
HRH Duchess of York at  
Liverpool Road Station, Manchester  
Friday 10 March, 1989

## **VCT MEMBERSHIP SECRETARY & COVENANT TREASURER**

We regret to announce the resignation of Arthur Berry as Covenant Treasurer and as Membership Secretary: Arthur is however continuing as one of our three trustees and as shop rostering officer. Would members please note that the work of the Covenant Treasurer is now being dealt with by our Treasurer, Trevor England. At the time of writing the post of Membership Secretary is also being covered by Trevor England. If any member has not renewed or received their membership card please contact him at 15 Crosby Avenue, Bramley, Rotherham, S66 0UG.

We have had a decent influx of new members so far this year, just ahead of 1988 figures. We would like to see some recruits coming forward to assist in the shops at weekends, we are still a bit thin on the ground in this department, if you are willing to give the shops a whirl, then contact Arthur Berry on Bradford 591488 and he will arrange to see you. Our Keighley shop, unfortunately has been out of action recently due to the platform collapse to the north of the canopy on platform 4, this had stopped access to our shop, but conditions have improved, although it will be some time before the whole platform is rebuilt, we have a temporary way through for customers.

Thanking all for their continued support.

## **INGROW CARRIAGE MUSEUM**

Since the report in the last issue of VCT News much progress has been made. The foundations were completed and frame erected as can be seen in the photograph. This followed the roof, side and end cladding. Some problems with the retaining wall on the side away from the Railway mean that cladding is almost complete. The area inside the shed is levelled and partly ballasted ready for track laying. The area outside is progressively being cleared of spoil. The doors have been hung and await the installation of bottom runners. Electricity is connected ready for installation. Track is to be laid between 11 and 15 September ready for an informal opening on 14 October.

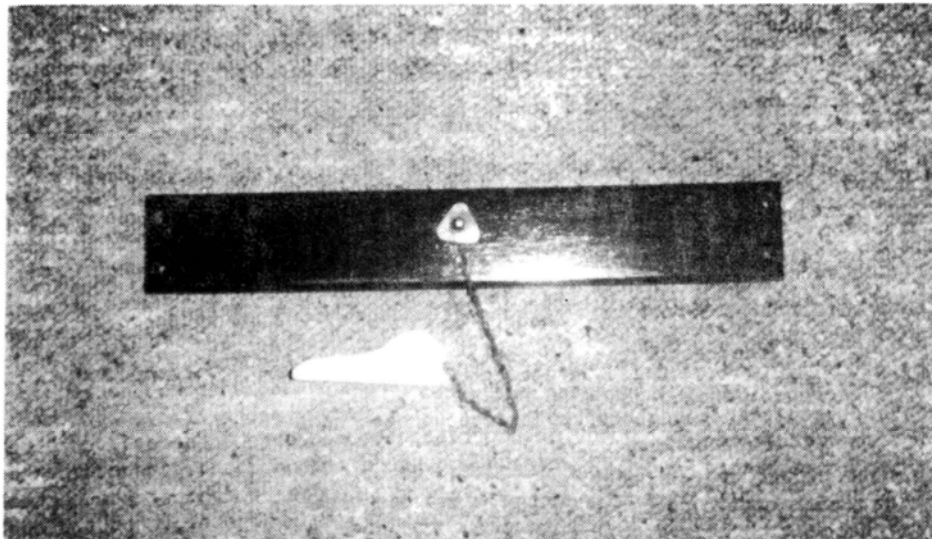


HRH The Duchess of York alights from GCR No 176  
accompanied by Dr J Patrick Greene, Director,  
Museum of Science and Industry, Frank Needham, Stationmaster  
holds door open.

Liverpool Road Station, Manchester  
Friday 10 March, 1989

**AN INTERESTING FIND IN THE MIDLAND 6-  
WHEEL COACH NO 284677  
G H Foxley**

Whilst clearing out the debris left after the recent repairs to the Midland 6-wheel coach, it was noticed that on a number (at least three) of the original garnish rails from the insides of compartment doors, there was an "extra" roundhead brass screw (size 6) just below the droplight strap stud plate. On removing one of these screws, the remains of a link of iron chain was found. When the end compartment was cleared out, a whistle-shaped block of wood (5 inches long, 1½ inches thick) with a short length (11 inches) of iron chain attached by a similar screw was found. The original colour of the block of wood was "yellowish" but it was extremely dirty and the true shade could not be established. It seemed likely that this block of wood had originally been attached to a garnish rail by the chain. Its purpose can only be guessed at but it could have been some sort of wedge to prevent the droplight from being lowered from the outside of the carriage. Whether the fitting is original Midland or a later LMS addition again is a matter for conjecture.



The interesting find on the Midland coach

## Sir Berkeley

While Bellerophon is on its travel once again we have had more time to concentrate on Sir Berkeley.

The expansion links are now fitted only leaving the valve gear to set.

To make a change we then turned to the boiler and fitted the tubes but have not expanded them all in a yet.

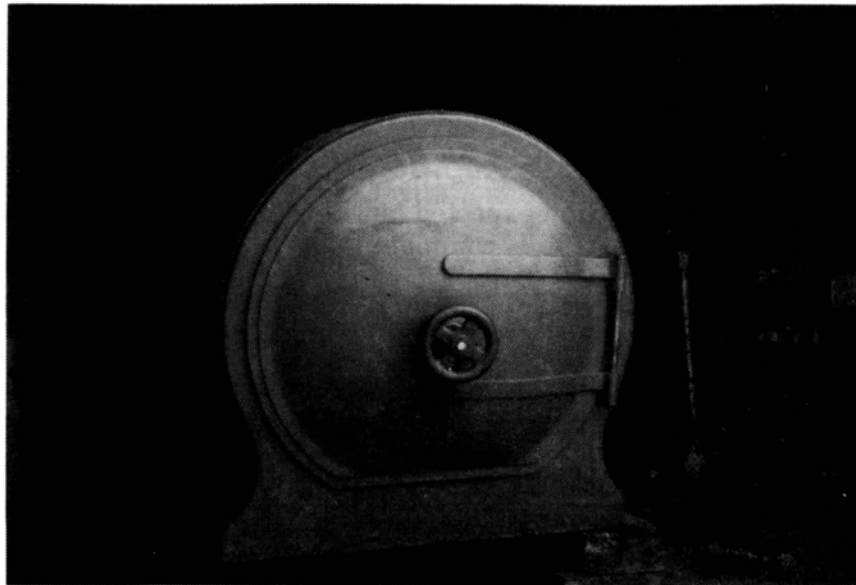
Hopefully in the next few weeks the steam brake will be fitted, this job has taken longer than expected but at the end will see the lower half of Sir Berkeley virtually complete.



Eric Blake ready to fit left-hand expansion link

With the aid of a grant we have been able to get the go ahead for the rebuilding of the saddle tank therefore it was transported along with the 8F frames to Tom Riley Engineering at Kirkby near Liverpool, the new tank is expected back in the near future so the job is going steadily along. Hopefully it will be finished by the time the shed is connected back to the railway.

Bellerophon and the MS&L coach will be in use at Liverpool Road Station, Manchester on 16 and 17 September for Castlefield Carnival and on 21 and 22 October for the railway weekend. VCT members can obtain free entry on production of a current VCT membership card.



Sir Berkeley's new smokebox door

## **PRESENTING THE VCT COLLECTION**

As we open the doors of the Vintage Carriages Trust's Ingrow Carriage Museum the complications of the construction period can be put behind us. But many challenges lie ahead. VCT has a collection of railway vehicles of which it is justifiably proud. How are we to present them to our visitors? We could just open the doors and let them walk round. But will they really appreciate a shed of old railway carriages if we make no effort to direct their eyes?

One possible approach is the guided tour. This could be provided for a group of up to eight visitors, the maximum number which can comfortably sit in a coach compartment. The choice will not be what to show them but what to leave out! You find that hard to believe?

Then consider the following themes: each of them should occupy between five and ten minutes. The guide would either do the talking himself or activate an audio presentation (tape recorder for those of you not used to Museum speak)

Suggested topics:

Rail Travel During the War

Living in Metroland

A Guard at Work

“Money Sunk and Lost” becomes “Gone Completely”

Victorian First Class Travel

Victorian Third Class Travel

The Great Northern Railway in the Keighley area

The KWVR Engine Driver

The Industrial Locomotive

The Contractor's Locomotive

The Boat Train

The Railway Poster

So there are my twelve suggestions. With a little thought you should be able to come up with several more. Why not tell me about them? Any guided tour would be pushed to take in more than about three of these themes so there is plenty of scope for ringing the changes to encourage return visits.

Who will be the guides? I hope we will find that a significant number of VCT members and friends will enjoy the rather different challenge of acting as Interpreters rather than railwaymen or shopkeepers. If you would like to become involved please drop me a line at Haworth Station.

One final thought. These days Museums are very keen on visitor participation. How can we encourage visitor participation at Ingrow?

Chris Smyth

## NOTICE OF ANNUAL GENERAL MEETING

Notice is hereby given that the Annual General Meeting will be held at the Globe Hotel, Parkwood Street, Keighley on Saturday 14 October 1989 at 7.30 p.m. The Agenda will be as follows:

- 1 Apologies for absence
- 2 Minutes of previous Annual Meeting, held 8 January 1989
- 3 Matters arising therefrom
- 4 Chairman's Report
- 5 Treasurer's Report
- 6 Reports of the following:
  - a) Covenant Treasurer and Membership Secretary
  - b) Publicity Officer
  - c) Editor, VCT News
  - d) Shop Managers
- 7 Reports concerning:
  - a) Ingrow Carriage Museum
  - b) Coaches
  - c) Locomotives
- 8 Proposed increase in Subscription rate (at present £2.50 annually)
- 9 Election of: President: up to three Vice-Presidents: Chairman: Vice-Chairman: Secretary: Trustee: Treasurer: Membership Secretary: up to four Committee Members
- 10 Appointment of Auditors

For information: the retiring officers and Members of Committee are: President, Mr R Higgins: Vice Presidents, Mr V Smallwood and Mr P Kilburn: Chairman, Mr C G Smyth: Vice Chairman, Mr P Eastham: Treasurer, Mr T R England: Secretary, Mr M W Cope: Membership Secretary, (vacancy): Committee Members: Messrs J Brailsford, J Downs, D E Mills and M Todd. The Trustee retiring in rotation is Mr W H Black. (Mr G Bentley's period of office as Trustee expires at the 1990 Annual Meeting, and that of Mr A Berry at the 1991 Annual Meeting. All the above are eligible for re-election.

Nominations for the positions listed above are now called for and should be sent to me at the Railway Station, Haworth, Keighley, West Yorkshire BD22 8NJ. They should be seconded and countersigned by the Nominee as willing to stand. In accordance with the Constitution, nominations may be accepted at the Annual Meeting only if an insufficient number of nominations for that post have been received prior to that meeting.

M W Cope – Secretary VCT

Refreshments (sandwiches etc) will be available at the Meeting. It would be helpful if you could let me know whether or not you are likely to be present, to allow me to advise the Globe as to what quantities are required.

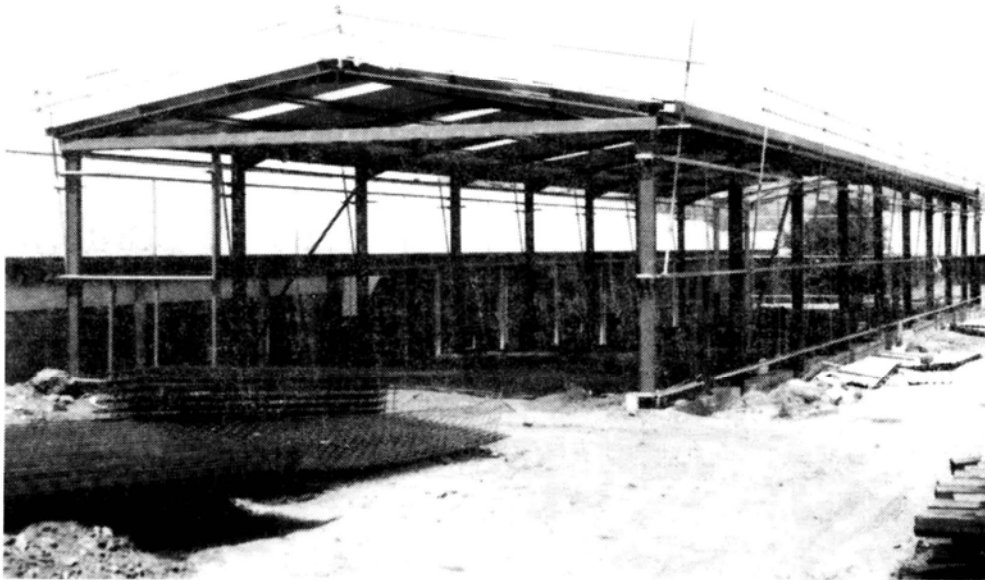


**INGROW CARRIAGE MUSEUM VIEWING  
AFTERNOON & ANNUAL GENERAL MEETING**  
*be one of the very first to view our new museum!*

We intend having two Opening Ceremonies for our new Museum. The first will be very informal, in that you, and all who have helped towards its completion, are invited to view the Museum Shed on the afternoon of our Annual Meeting – that is **on the afternoon of Saturday 14 October**. If you have suggestions as to how the Museum should develop, and (even more importantly?) if you are able to help with long-term development of, and the staffing of, the Museum: this is the opportunity to make yourself and your views known. We look forward to seeing you then.

We intend saving the “formal” opening until the Spring – hopefully with a Museums Personality available to perform the actual Ceremony. We will of course let you know the detail of the when the overall picture is rather clearer. By then, we will know just what is involved in running our own Museum.

Which is a reminder to again say: please contact the Chairman or the Secretary should you be in a position to contribute towards the planning and the operation of this long-term and major project.



Ingrow Carriage Shed nearing completion

## LOCOMOTIVE REPORTS

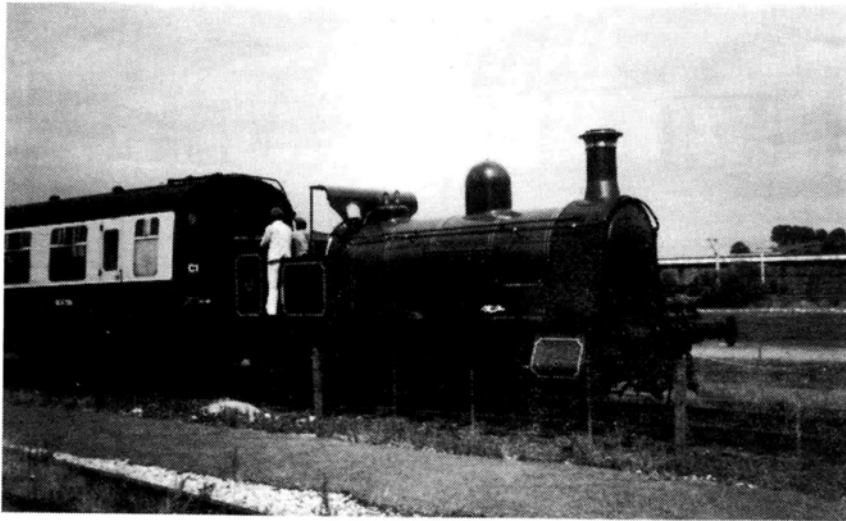
### Bellerophon

This year it was my intention to give Bellerophon a rest and concentrate on Sir Berkeley but all that changed with a phone call one night. Within a few days Bellerophon was on its way to Carnforth to cover for their loco shortage with an invitation to use their wheel drop facilities which unfortunately I have not had the time to use.

The Eggborough Power Station open day event was pre booked before Carnforth so the intention is to transport it direct from Carnforth to Eggborough and return to Haworth. This time a letter arrived asking for the loan of Bellerophon to the Liverpool Road Museum at Manchester in October and longer if possible. The revised plan now is to transport Bellerophon from Eggborough to Manchester direct therefore giving them 2 months loan.

The museum is a very interesting place and we should get good publicity there with our MS&L coach and not forgetting the large beam engine which used to power Haydock Colliery Joiners shop.

Next year I think I won't bother planning anything and just see what happens.



**LETTER FROM FRANK NEEDHAM**  
**Stationmaster**  
**Greater Manchester Science Museum**

Dear Mr Cope,

I am very sorry that I was unable to be present for your photocall at Liverpool Road Station on Saturday 25th February. I know that my colleagues made you very welcome and helped you with positioning your coach.

We are very pleased to be the custodians of your beautifully restored coach and pleased to be associated with another railway preservation society that is interested in rolling stock as well as locomotives. We are at present in process on constructing a replica of an 1830 Liverpool and Manchester 2nd class coach (on a standard wagon frame for continuous brakes). This is to replace one of a pair made for the Great Railway Exposition in 1980 to celebrate our station's 150th anniversary. These two vehicles were built of softwood for a six-wheel festival and one is still in traffic!

You will know that your ex GCR coach No 176 was the Royal Saloon in the special train for HRH The Duchess of York when she visited us last Friday.



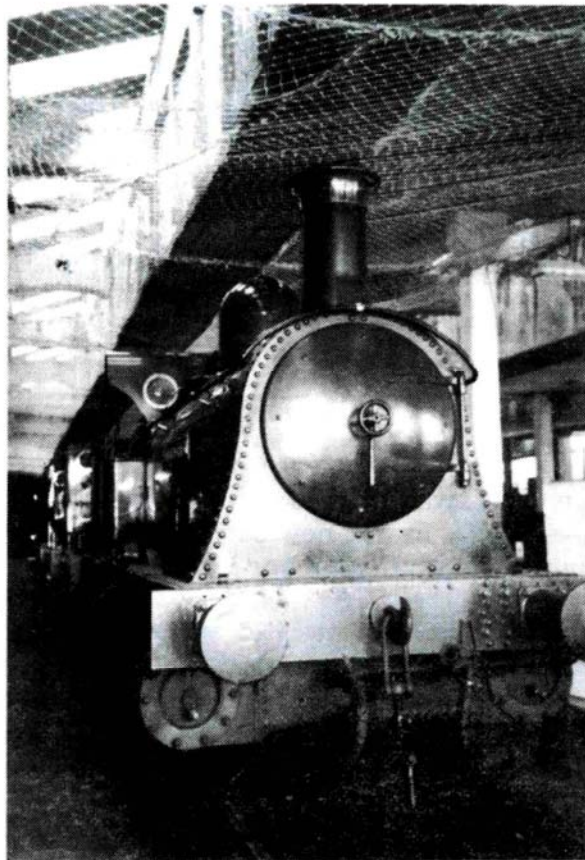
Recently the VCT was offered a number of posters by Frank Newbould for display at our new carriage museum. The following letter highlights this gentleman and his keen interest for art.

Frank Newbould was born in Bradford and educated locally and went to Bradford Art College. He worked at Percy Lund Humphries before the 1914/18 War, and as is understood did comic drawings and caricatures for Punch during the War. He certainly had a pawky and wholly irreverent sense of humour.

He had a keen eye for the significant and was equally at home whether drawing landscape or figures. The commanding figures that dominate some of his posters – Drake on the Plymouth and Shakespeare in the case of Stratford – testify to this.

He was quite blistering about much contemporary art. He became one of the four or five leading poster artists between the Wars for transport, though he did work for Steamship lines, Empire Marketing Board as well as the main railway lines and the London Tube and Buses.

Frank died in late 1951. It is now good to know that he is being recognised after so long and that future generations will be able to enjoy his work.



Bellerophon in Carnforth Shed, May 1989